



**VOP**  
DENTAL EQUIPMENT MANUFACTURING



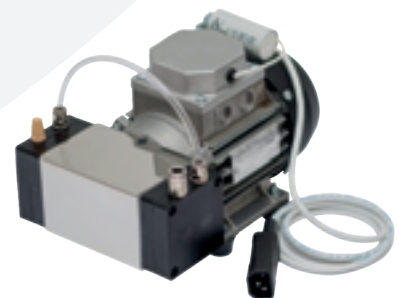
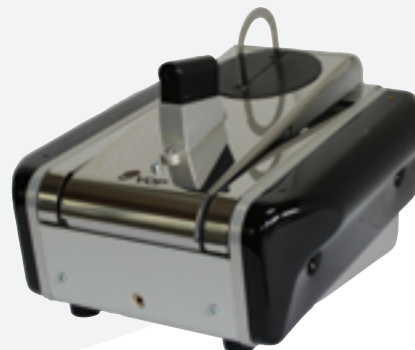
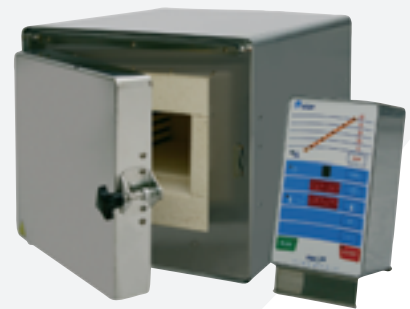
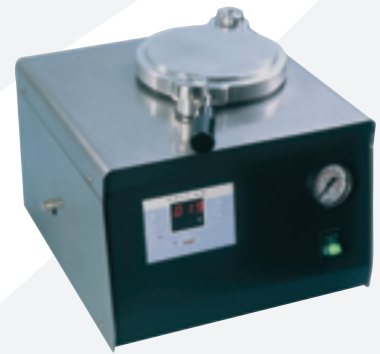
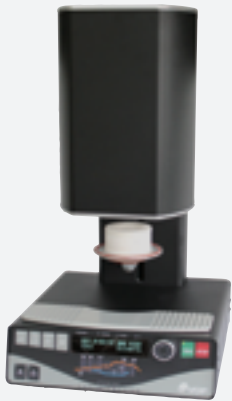
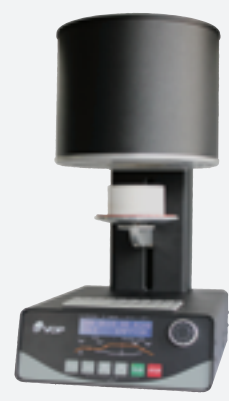
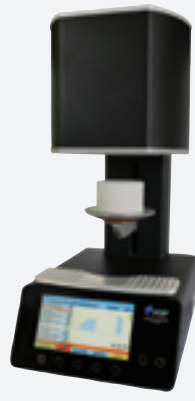
005

*Quality above all*



005

- 1990 VOP Co is established.
- 1991 Obtained permission to manufacture technical equipment for Russia and Switzerland.
- 1992 Started production of dental laboratory equipment.
- 1992 Introduced the first furnace for metal ceramics on the market.
- 1993 Started the production of muffle furnaces.
- 1995 Started producing machines for centrifugal casting with HF melting of the metals.
- 1996 Introduced a milling machine on the market.
- 1997 Obtained ISO 9002 certification.
- 2002 Introduced new furnace for press ceramics Ceramicmaster Press
- 2003 Obtained ISO 9001:2000 certification.
- 2006 Developed two new machines: new casting machine LC-Cast 600A of higher quality and new model of furnace for ceramics Ceramicmaster E1000.
- 2006 Developed a new machine: new generation of separator for plaster moulds with laser marker SlitPrecise SP100.
- 2011 Introduced a new machine: wet and dry polymerization unit Poly AM.
- 2012 Developed a new machine: Programmable dental furnace for sintering of zirconium ZirconMaster S
- 2015 Developed a new machine: table top casting machine LC-Cast 600T.
- 2016 Introduced a new model of furnace for ceramics Ceramicmaster E20.
- 2016 Mr. Nikolay Vatsov became an Executive Manager.
- 2017 Introduced a new model of furnace for ceramics Ceramicmaster E3000.
- 2018 Obtained ISO 9001:2015 Certification.
- 2018 Trade mark registration
- 2019 Introduced new furnace for press ceramics Ceramicmaster Press PRO
- 2019 Introduced new model pressure polymerization unit Poly MAX
- 2021 Obtained ISO 9001:2015 Certification.
- 2023 Developed a new machine: Programmable dental furnace for sintering of zirconium ZirconMaster FL



# Ceramicmaster Press PRO

Automatic programmable dental furnace for metal, pure and press ceramics

- designed for all type of dental metal, pure and press ceramics
- no need of compressor for the pressing process
- auto calibration of the temperature
- 255 individual programs are available
- optional increase of number of the programs up to 400 is available
- completely controlled process - programmable parameters in every program
- improved system of self-diagnostics and auto calibration
- 7" TFT display with protective tempered glass
- sensor buttons
- graphical display of processes progress
- heater with heating element in a quartz spiral tube
- Pt/Ro thermocouple
- automatic continuation of the program after short power breakdown
- USB transfer of programs parameters
- remote analysis of damage:
- accessories:
  - isolation press table Ref. № 122000022
  - ceramic insert 100 g ring Ref. № 122000023
  - ceramic insert 200 g ring Ref. № 122000023
  - isolation table Ref. № 122000025
  - firing tray Ref. № 122000026
  - pins Ref. № 122000027
  - vacuum pump 50RVD Ref. № 033000000

		Technical data
Power supply		110/230 V ±10%, 50/60 Hz
Power consumption		
Furnace with vacuum pump		1700 W
Vacuum pump data		
Suction capacity		> 22 l/min
Vacuum		Up to 0,96 bar
Maximum firing temperature		1200°C
Firing chamber dimensions		∅ 95 mm, h 60 mm
Dimensions		
W/D/H		260x370x750 mm
Weight		24,2 kg



Ref. № 126000000

# Ceramicmaster Press

Programmable dental furnace for metal, pure and press ceramics

- designed for all type of dental metal, pure and press ceramics
- no need of compressor for the pressing process
- 100 operating programmes
- completely controlled process of firing
- improved system of self-diagnostics
- auto calibration of the temperature
- quartz muffle
- accessories:
  - isolation press table Ref. № 122000022
  - ceramic insert 100 g ring Ref. № 122000023
  - ceramic insert 200 g ring Ref. № 122000023
  - isolation table Ref. № 122000025
  - firing tray Ref. № 122000026
  - pins Ref. № 122000027
- vacuum pump PVM122 Ref. № 032000000

		Technical data
Power supply		110/230 V ±10%, 50/60 Hz
Power consumption		
Furnace with vacuum pump		1700 W
Vacuum pump data		
Suction capacity		22 l/min
Adjustable vacuum		from 0,1 to 0,92 bar
Maximum firing temperature		1200°C
Firing chamber dimensions		∅ 95 mm, h 60 mm
Dimensions		
W/D/H		370x380x740 mm
Weight		30 kg



Ref. № 122000000

## Ceramicmaster E3000 ●●●

Automatic programmable dental furnace for metal and pure ceramics

- designed for all available types of dental metal ceramics
- 255 individual programs
- completely controlled process - programmable parameters in every program
- improved system of self-diagnostics and auto calibration
- 7" TFT display with protective tempered glass
- sensor buttons
- graphical display of processes progress
- heater with heating element in a quartz spiral tube
- Pt/Ro thermocouple
- automatic continuation of the program after short power breakdown
- USB transfer of programs parameters
- remote analysis of damage
- accessories:
  - isolation table Ref. № 122000025
  - firing tray Ref. № 122000026
  - pins Ref. № 122000027
- vacuum pump 50RVD Ref. № 033000000

	Technical data
Power supply	110/230 V ±10%, 50/60 Hz
Power consumption	
Furnace with vacuum pump	1500 W
Furnace without vacuum pump	1350 W
Vacuum pump data	
Suction capacity	>22 l/min
Vacuum	Up to 0,96 bar
Maximum firing temperature	1200°C
Firing chamber dimensions	∅ 95 mm, h 60 mm
Dimensions	
W/D/H	260x370x565 mm
Weight	21 kg



Ref. № 123000000

## Ceramicmaster E1000 ●●●

Programmable dental furnace for metal and pure ceramics

- designed for all type of dental metal and pure ceramics
- 100 operating programs
- completely controlled process of firing
- improved system of self-diagnostics
- auto calibration of the temperature
- quartz muffle
- accessories:
  - isolation table Ref. № 122000025
  - firing tray Ref. № 122000026
  - pins Ref. № 122000027
- vacuum pump PVM122 Ref. № 032000000

	Technical data
Power supply	110/230 V ±10%, 50/60 Hz
Power consumption	
Furnace with vacuum pump	1700 W
Vacuum pump data	
Suction capacity	22 l/min
Adjustable vacuum	from 0,1 to 0,92 bar
Maximum firing temperature	1200°C
Firing chamber dimensions	∅ 95 mm, h 60 mm
Dimensions	
W/D/H	370x380x580 mm
Weight	27 kg



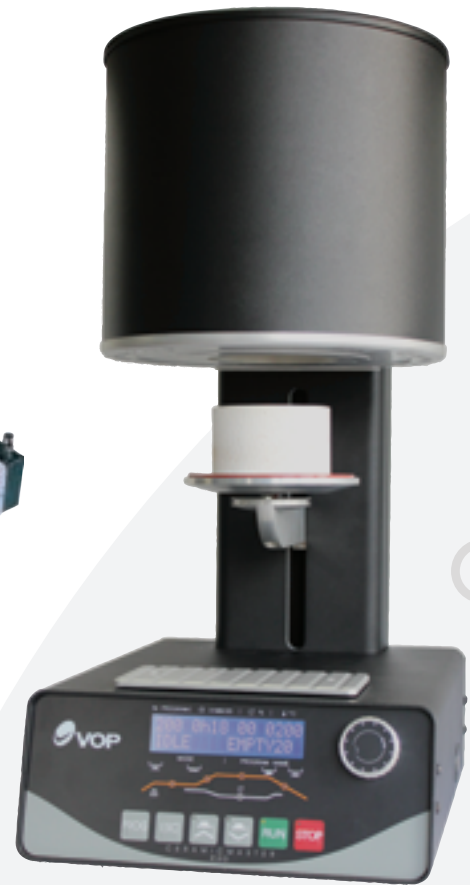
Ref. № 211000000

# Ceramicmaster E20

Automatic programmable vacuum furnace for dental ceramics.

- designed for all available types of dental metal ceramics
- 201 operating programs
- completely controlled process - 14 programmable parameters in every program: name, idle temperature, dry temperature, pre drying time, drying time, firing, first cooling time, second cooling time, vacuum control
- improved system of self-diagnostics and auto calibration
- multifunctional handle easy for operation
- a quartz muffle
- an option for automatic continuation of the program after short power breakdown
- an option for transfer of program parameters on USB
- an option for remote analysis of damage
- accessories:
  - isolation table Ref. № 122000025
  - firing tray Ref. № 122000026
  - pins Ref. № 122000027
- vacuum pump PVM122 Ref. № 032000000

Technical data	
Power supply	~230 V ±10%, 50/60 Hz
Power consumption	
Furnace with vacuum pump	1700 W
Furnace without vacuum pump	1550 W
Vacuum pump data	
Suction capacity	22 l/min
Adjustable vacuum	from 0,1 to 0,92 bar
Maximum firing temperature	1200°C
Firing chamber dimensions	∅ 95 mm, h 60 mm
Dimensions (W/D/H)	265/370/565 mm
Weight	24 kg



Ref. № 245000000

# ZirconMaster S

Programmable dental furnace for sintering of ZnO<sub>2</sub>

- designed for all type of dental of ZnO<sub>2</sub>
- 10 operating programs
- fast temperature increase
- controlled cooling process
- high quality MoSi<sub>2</sub> heating elements
- low energy consumption during main firing stage
- accessories:
  - tray GTS Ref. № 234000001
  - tray AG Ref. № 234000002
  - pearls AG Ref. № 234000003
  - pearls Noritake Ref. № 234000004
  - gripper tray Ref. № 234000005
  - isolation table bottom Ref. № 234020301
  - isolation table top Ref. № 234020302

Technical data	
Power supply	110/230 V ±10%, 50/60 Hz
Power consumption nom / max	1650 W /2500W
Firing chamber dimensions	120x120x100
Maximum firing temperature	1600°C
Dimensions	
W/D/H	420x400x870 mm
Weight	60 kg



Ref. № 234000000

Vacuum pump

- Oil less rocking piston pump.
- Thermally protected (1300°C )

Technical data	
Power supply	230 V ±10%, 50 Hz
Power consumption	250 W
Suction capacity	50 l/min
Ultimate pressure	0.95 Bar
Dimensions W/D/H	160/210/250 mm
Weight	7.65 kg

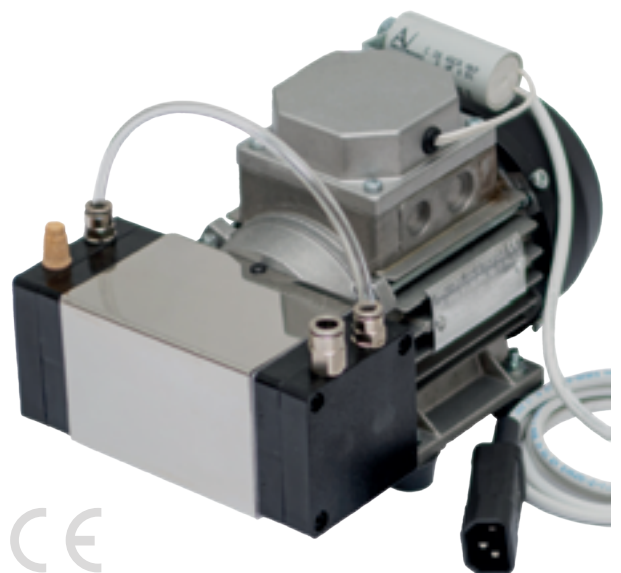


Ref. № 033000000

Vacuum pump

- Oil less piston pump.
- Thermally protected (1300°C )

Technical data	
Power supply	230 V ±10%, 50 Hz
Power consumption	150 W
Suction capacity	22 l/min
Ultimate pressure	0.92 Bar
Dimensions W/D/H	160/240/170 mm
Weight	4 kg



Ref. № 032000000

## LC-Cast 600T

Automatic tabletop dental casting unit with high frequency induction melting and centrifugal casting.

- designed for casting of dental Co-Cr, Ni-Cr and precious alloys
- tabletop design
- both manual and automatic mode of melting
- automatic maintenance of optimum power
- automatic casting mode
- autonomic cooling system
- accessories:

- crucible tray	Ref. № 062000035
- ring gripper	Ref. № 062000037
- crucible	Ref. № 062000038
- silicon ring №2	Ref. № 062000039
- silicon ring №3	Ref. № 062000040
- silicon ring №4	Ref. № 062000041
- graphite insert	Ref. № 062000042



	Technical data
Power supply	110/230V~, ±10%, 50/60Hz
Power consumption	2500 W
Minimum alloy quantity in the crucible	7 g
Maximum alloy quantity in the crucible	80 g
Crucible type for dental alloy	sceramic crucible
Crucible type for precious alloys	ceramic crucible, with graphite insert
Maximum time for fully melting of 30 g dental alloy	285 g
Maximum time for fully melting of 30 g dental alloy	60 s
Cooling	autonomous, distilled water cooling
HF power setting for melting	automatic
Motor acceleration setting	manual
Casting	automatic
Dimensions W/D/H	564x620x540 mm
Weight	75 kg



Ref. № 080000000

## Firemagic ET400

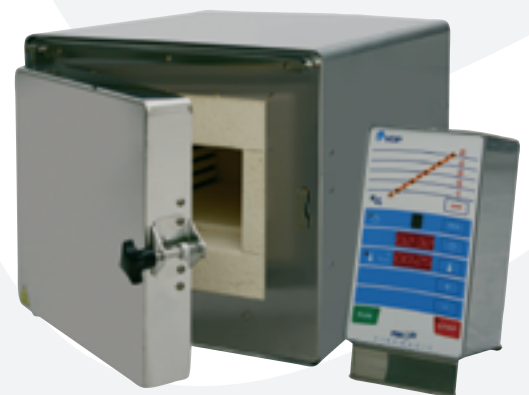
Preheating oven for casting rings and wax evaporation

- 10 +1 user programs
- 5 temperature zones
- casting in vacuum/argon atmosphere
- automatic parameter control
- postponed start up to 90 h
- automatic control of steam extractor
- working with shock investment
- accessories:

- steam extractor	Ref. № 058000000
- ceramic trays set	Ref. № 054000013



	Technical data
Power supply	230 V ±10%, 50 Hz
Power consumption	2000 W
Maximum firing temperature	1100°C
Maximum program duration	100 h
Temperature speed of increase between the zones	from 1°C/min to 10°C/min
Firing chamber dimensions W/D/H	180/100/170 mm
Dimensions	
W/D/H	360x400x360 mm
Weight	28 kg



Ref. № 054000000



## Wet and dry pressure polymerization unit

- polymerization unit for wet and dry polymerization
- completely automatic process
- two stage polymerization
- microprocessor control of the temperature and polymerization time
- suitable for all types of flasks
- a whole articulator can be put in the unit chamber
- accessories:
  - sealing ring
  - metal filter

Ref. № 042010042  
Ref. № 041010018



Technical data	
Power supply	230 V ± 10%, 50 Hz
Power consumption	1220 W
Working chamber internal dimensions	Φ225 mm, H168 mm
Chamber volume	6,5 l
Maximum working pressure	6 bar
Programmable working pressure	from 40 up to 125°C
Programmable time for polymerization	from 1 to 99 min
Dimensions	
W/D/H	390x450x340 mm
Weight	28,7 kg



Ref. № 042000000

## Wet and dry pressure polymerization unit

- polymerization unit for wet and dry polymerization
- completely automatic process
- two stage polymerization
- microprocessor control of the temperature and polymerization time
- stainless steel chamber
- accessories:
  - sealing ring
  - metal filter
  - basket Coltene
  - basket A.gree

Ref. № 041010013  
Ref. № 041010018  
Ref. № 041010300  
Ref. № 041010400



Technical data	
Power supply	230 V ±10%, 50 Hz
Power consumption	1220 W
Working chamber internal dimensions	Φ 140 mm, H 145 mm
Chamber volume	1,5 l
Maximum working pressure	6 bar
Programmable working pressure	from 40 up to 125°C
Programmable time for polymerization	from 1 to 99 min
Dimensions	
W/D/H	315x350x260 mm
Weight	13 kg



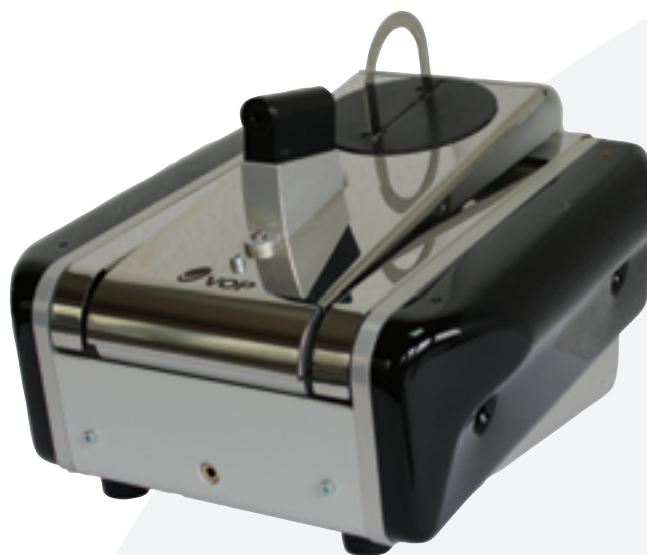
Ref. № 041000000

# SlitPrecise SP100

New generation of model saw for plaster models

- laser guidance of the cutting
- cutting from the bottom up
- connection to aspiration unit is possible
- specialized safety system during cutting operation
- accessories:
  - diamond disk DFS Ref. № 110000001
  - diamond disk Nuova Ref. № 110000002

Technical data	
Power supply	110/230 V ±10%, 50/60 Hz
Power consumption	200 W
Maximum revolutions	10000 rpm
Maximum depth of the cut	26,5 mm/12 mm
Width of the cut	0,3 mm
Diamond cutting disk	Φ85xΦ16x0,3
Laser	class
Dimensions	
W/D/H	290x320x170 mm
Weight	10 kg



Ref. № 110000000

# PinPrecise PP100

Pin drilling unit

- drill revolution regulation
- automatic switch on system
- compact and ergonomic
- dust reduction system
- accessories:
  - pin system Ref. № 100000032
  - drill Ref. № 100000033

Technical data	
Power supply	110/230 V ±10%, 50/60 Hz
Power consumption	100 W
Maximum drill revolutions	4000 rpm
Collet diameter	∅ 3 mm
Drilling depth	12 mm
Laser	class 3 max 5 mW
Dimensions	
W/D/H	157x410x160 mm
Weight	5 kg



Ref. № 100000000

Vmix is a highly-productive vacuum mixer with micro-processor control, designed for mixing of investments, plaster and silicone.

VMix has the following characteristics:

- completely automatic process
- wall mounting
- desktop stand (optional)
- visual vacuum control
- blue LCD display
- easy to program
- 3 program parameters: time for vacuuming before mixing, mixing time, time for vacuuming after mixing

• accessories:

- Stand for blending unit VMix
- Mixing bowl 250 ml

SVR M2

- Mixing bowl 550 ml

SVR M5

- Mixing bowl 835 ml

SVR M8



Technical data	
Power supply	110/230 V ±10%, 50/60 Hz
Maximum power consumption	max. 350 W
Operating speed	330 rev/min
Vacuum pump capacity	20 L/min
Programable time:	
- pin system	0 to 20 s
- mixing	5 to 250 s
- vacuuming after mixing	0 to 10 s
Working temperature	50°C и 400°C
Dimensions	
W/D/H	200/310/350mm
Weight	10 kg





Industrial Zone Microelectronica; 2140 Botevgrad; Bulgaria  
Postal address: PO Box 35  
Tel: +359 723 66 304; Mobil: +359 888 968 990 / +359 882 344 960  
e-mail: [official@vop-bg.com](mailto:official@vop-bg.com)  
[www.vop-bg.com](http://www.vop-bg.com)

