



VOP
DENTAL EQUIPMENT MANUFACTURING



005

Quality above all



1990 VOP Co. is established.

1991 Permitted to manufacture technical equipment for Russia and Switzerland.

1992 Started production of dental laboratory equipment.

1992 Introduced the first furnace for metal ceramics on the market.

1993 Started the production of preheating furnace.

1994 Registered in the Bulgarian Chamber of Commerce and Industry.

1995 Started production of centrifugal casting machines with HF melting of dental alloys.

1996 Introduced a milling machine on the market.

1997 Obtained ISO 9002 certification.

1999 Developed and introduced automatic manipulators for the electronic industry.

2002 Introduced furnace for press ceramics Ceramicmaster Press on the market.

2003 Transformed from VOP Co. into VOP Ltd.

2003 Obtained ISO 9001:2000 certification.

2004 Became a distributor of a range of world companies - manufacturers of dental equipment and consumables.

2009 Obtained ISO 9001:2008 Certification.

2011 Developed a new machine: wet and dry polymerization unit.

2013 Mr. Jacek Stefan Zwlep joined the company as Marketing and Sells Director.

2015 Developed a new machine: table top casting machine.



005



Ceramicmaster Press

Programmable dental furnace for metal, pure and press ceramics

- designed for all type of dental metal, pure and press ceramics
- no need of compressor for the pressing process
- can be used for metal ceramics and sintering of pure ceramics, based on aluminium oxide
- 100 operating programmes
- completely controlled process of firing
- improved system of self-diagnostics
- auto calibration of the temperature
- quartz muffle
- accessories:
 - isolation press table Ref. № 122000022
 - ceramic insert 100 g ring Ref. № 122000023
 - ceramic insert 200 g ring Ref. № 122000023
 - isolation table Ref. № 122000025
 - firing tray Ref. № 122000026
 - pins Ref. № 122000027
- vacuum pump PVM122 Ref. № 032000000

Technical data	
Power supply	110/230 V ±10%, 50/60 Hz
Power consumption Furnace with vacuum pump	1700 W
Vacuum pump data	
Suction capacity	22 l/min
Adjustable vacuum	from 0,1 to 0,92 bar
Maximum firing temperature	1200°C
Firing chamber dimensions	∅ 95 mm, h 60 mm
Dimensions	
W/D/H	370x380x740 mm
Weight	30 kg



Ref. № 122000000

Ceramicmaster E1000

Programmable dental furnace for metal and pure ceramics

- designed for all type of dental metal and pure ceramics
- 100 operating programs
- completely controlled process of firing
- improved system of self-diagnostics
- auto calibration of the temperature
- quartz muffle
- accessories:
 - isolation table Ref. № 122000025
 - firing tray Ref. № 122000026
 - pins Ref. № 122000027
- vacuum pump PVM122 Ref. № 032000000

Technical data	
Power supply	110/230 V ±10%, 50/60 Hz
Power consumption Furnace with vacuum pump	1700 W
Vacuum pump data	
Suction capacity	22 l/min
Adjustable vacuum	from 0,1 to 0,92 bar
Maximum firing temperature	1200°C
Firing chamber dimensions	∅ 95 mm, h 60 mm
Dimensions	
W/D/H	370x380x580 mm
Weight	27 kg



Ref. № 211000000

Ceramicmaster E10

Programmable dental furnace for metal ceramics

- designed for all type of dental metal and pure ceramics
- 100 operating programs
- completely controlled process of firing
- improved system of self-diagnostics
- auto calibration of the temperature
- quartz muffle
- accessories:
 - isolation table Ref. № 122000025
 - firing tray Ref. № 122000026
 - pins Ref. № 122000027
- vacuum pump PVM122 Ref. № 032000000



Ref. № 244000000

	Technical data
Power supply	110/230 V ±10%, 50/60 Hz
Power consumption Furnace with vacuum pump	1700 W
Vacuum pump data	
Suction capacity	22 l/min
Adjustable vacuum	from 0,1 to 0,92 bar
Maximum firing temperature	1150°C
Firing chamber dimensions	∅ 95 mm, h 60 mm
Dimensions W/D/H Weight	370x380x580 mm 26 kg

NEW

ZirconMaster S

Programmable dental furnace for sintering of ZnO₂

- designed for all type of dental of ZnO₂
- 10 operating programs
- fast temperature increase
- controlled cooling process
- high quality MoSi₂ heating elements
- low energy consumption during main firing stage
- accessories:
 - tray GTS Ref. № 234000001
 - tray AG Ref. № 234000002
 - pearls AG Ref. № 234000003
 - pearls Noritake Ref. № 234000004
 - gripper tray Ref. № 234000005
 - isolation table bottom Ref. № 234020301
 - isolation table top Ref. № 234020302



Ref. № 234000000

	Technical data
Power supply	110/230 V ±10%, 50/60 Hz
Power consumption	1650 W
Firing chamber dimensions Maximum firing temperature	120x120x100 1600°C
Dimensions W/D/H Weight	420x400x870 mm 60 kg

LC-Cast 60A

Semi-automatic dental casting unit with high frequency induction melting and centrifugal casting

- designed for casting of dental Co-Cr, Ni-Cr and precious alloys
- autonomic cooling system
- robust
- accessories:
 - crucible tray Ref. № 062000035
 - ring gripper Ref. № 062000037
 - crucible Ref. № 062000038
 - silicon ring №2 Ref. № 062000039
 - silicon ring №3 Ref. № 062000040
 - silicon ring №4 Ref. № 062000041
 - graphite insert Ref. № 062000042



Ref. № 061000000

Technical data	
Power supply	110/230 V ±10%, 50/60 Hz
Power consumption	3 kW
Minimum alloy quantity in the crucible	7 g
Maximum alloy quantity in the crucible	80 g
Crucible type for dental alloys	ceramic crucible
Crucible type for precious alloys	ceramic crucible with graphite insert
Maximum time for fully melting of 30 g dental alloy	60 s
Cooling	autonomous distilled water cooling
HF power setting for melting	manual
Motor acceleration setting	manual
Casting	manual
Dimensions	
W/D/H	620x660x1060 mm
Weight	130 kg

LC-Cast 600A

Automatic dental casting unit with high frequency induction melting and centrifugal casting

- designed for casting of dental Co-Cr, Ni-Cr and precious alloys
- both manual and automatic mode of melting
- automatic maintenance of optimum power
- autonomic cooling system
- accessories:
 - crucible tray Ref. № 062000035
 - ring gripper Ref. № 062000037
 - crucible Ref. № 062000038
 - silicon ring №2 Ref. № 062000039
 - silicon ring №3 Ref. № 062000040
 - silicon ring №4 Ref. № 062000041
 - graphite insert Ref. № 062000042



Ref. № 062000000

Technical data	
Power supply	110/230 V ±10%, 50/60 Hz
Power consumption	3 kW
Minimum alloy quantity in the crucible	7 g
Maximum alloy quantity in the crucible	80 g
Crucible type for dental alloys	ceramic crucible
Crucible type for precious alloys	ceramic crucible with graphite insert
Maximum time for fully melting of 30 g dental alloy	60 s
Cooling	autonomous distilled water cooling
HF power setting for melting	automatic/manual
Motor acceleration setting	manual
Casting	automatic
Dimensions	
W/D/H	620x620x1060 mm
Weight	135 kg

Automatic dental casting unit with high frequency induction melting, pressure injection casting in vacuum/argon atmosphere

- designed for casting of dental Co-Cr, Ni-Cr, Titanium and precious alloys
- pressure injection casting
- casting in vacuum/argon atmosphere
- compact tabletop design
- casting without crucibles or rings
- accessories:

- ring gripper	Ref. № 062000037
- pentaform	Ref. № 080000001
- ceramic Paper	Ref. № 080000002
- gasket	Ref. № 080000003
- ceramic Flask long	Ref. № 080000004
- upper Rubber Base	Ref. № 080000005
- metal Flask Long	Ref. № 080000006
- lower Rubber Base	Ref. № 080000007
- ceramic Support Ring	Ref. № 080000008
- 2DET-769-000-MH	Ref. № 080000009



Ref. № 080000000

	Technical data
Power supply	110/230 V ±10%, 50/60 Hz
Power consumption	4 kW
Output frequency	140 kHz
Melting temperature	1900°C
Maximum casting capacity of non-precious alloys	120 g
Maximum casting capacity of titanium alloys	70 g
Maximum casting capacity of precious alloys	285 g
Maximum time for fully melting of 30 g dental alloy	60 s
Cooling	autonomous distilled water cooling
HF power setting for melting	automatic
Casting	automatic
Dimensions	
W/D/H	220x200x200 mm
Weight	55 kg

Firemagic ET400 ●●●

Preheating oven for casting rings and wax evaporation

- 10 +1 user programs
- 5 temperature zones
- casting in vacuum/argon atmosphere
- automatic parameter control
- postponed start up to 90 h
- automatic control of steam extractor
- working with shock investment
- accessories:

- steam extractor	Ref. № 058000000
- ceramic trays set	Ref. № 054000013



Ref. № 054000000

	Technical data
Power supply	230 V ±10%, 50 Hz
Power consumption	2000 W
Maximum firing temperature	1100°C
Maximum program duration	100 h
Temperature speed of increase between the zones	from 1°C/min to 10°C/min
Firing chamber dimensions W/D/H	180/100/170 mm
Dimensions	
W/D/H	360x400x360 mm
Weight	28 kg

PinPrecise PP100 ● ● ●

Pin drilling unit

- drill revolution regulation
- automatic switch on system
- compact and ergonomic
- dust reduction system
- accessories:
 - pin system
 - drill

Ref. № 100000032
Ref. № 100000033



Ref. № 100000000

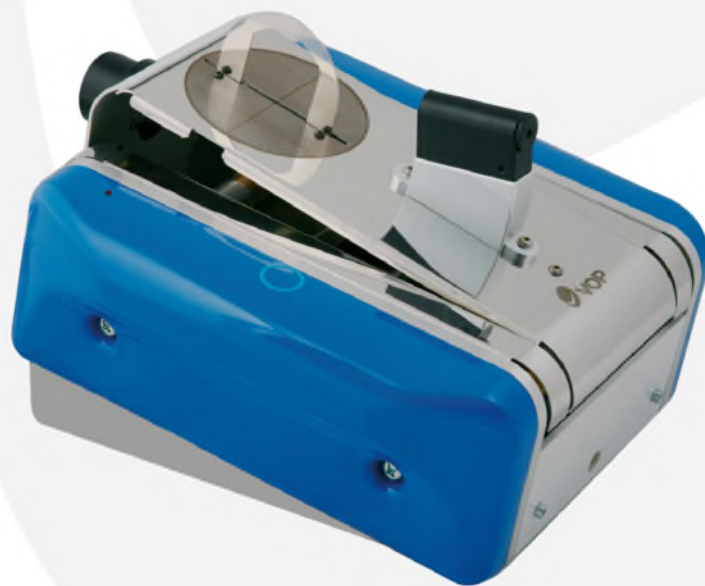
Technical data	
Power supply	110/230 V ±10%, 50/60 Hz
Power consumption	100 W
Maximum drill revolutions	4000 rpm
Collet diameter	∅ 3 mm
Drilling depth	12 mm
Laser	class 3 max 5 mW
Dimensions	
W/D/H	157x410x160 mm
Weight	5 kg

SlitPrecise SP100 ● ● ●

New generation of model saw for plaster models

- laser guidance of the cutting
- cutting from the bottom up
- connection to aspiration unit is possible
- specialized safety system during cutting operation
- accessories:
 - diamond disk DFS
 - diamond disk Nuova

Ref. № 110000001
Ref. № 110000002



Ref. № 110000000

Technical data	
Power supply	110/230 V ±10%, 50/60 Hz
Power consumption	200 W
Maximum revolutions	10000 rpm
Maximum depth of the cut	26,5 mm 12 mm
Width of the cut	0,3 mm
Diamond cutting disk	∅85x∅16x0,3
Laser	class
Dimensions	
W/D/H	290x320x170 mm
Weight	10 kg

Dental milling unit

- milling of both wax and dental alloys
- precise milling and drilling
- possibility to be used as a Parallelometer
- electromagnetic fixation of the working table
- accessories:
 - tools starting set
 - table

Ref. № 080000001
Ref. № 086030000



Ref. № 080000000

	Technical data
Power supply	230 V ±10%, 50 Hz
Power consumption	140 W
Micromotor 3M160-2 type	brushless
power output	160 W
speed	from 450 to 30000 rpm
reverse	yes
Working zone	
Y axis movement	75 mm
Z axis movement	30 mm
Φ axis rotation	360°C
Vertical travel of executive mechanism	70 mm
Dimensions	
W/D/H	245x340x520 mm
Weight	18 kg

Dental copying milling unit for ZnO₂

- compact and easy to work
- accessories:
 - tools starting set

Ref. № 087000001



Ref. № 087000000

	Technical data
Power supply	110/230 V ±10%, 50/60 Hz
Power consumption	200 W
Increase in the copied object in percents	20% - 30%
Micromotor 3M160-2 type	brushless
power output	160 W
speed	from 500 to 30000 rpm
torque	6,1 Ncm
Working temperature	5°C - 40°C
Dimensions	
W/D/H	330x210x310 mm
Weight	30 kg

SteamMaster

Dental steam cleaner

- Microprocessor control
- ON/OFF button fixed on the handle
- Unique process design permitting continuous work



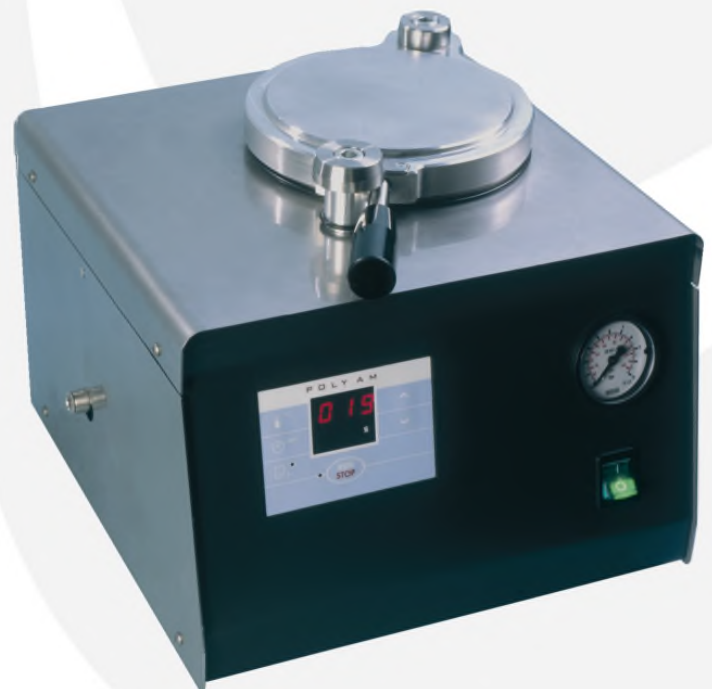
Ref. № 045000000

	Technical data
Power supply	230 V ±10%, 50 Hz
Power consumption	1800 W
Working temperature of the chamber	200°C
Steam flow	35 ml/min
Steam pressure	4-6 bar
Preheating time	8 min
Dimensions W/D/H	260x320x330 mm
Weight	14 kg

Poly AM

Wet and dry pressure polymerization unit

- polymerization unit for wet and dry polymerization
- completely automatic process
- two stage polymerization
- microprocessor control of the temperature and polymerization time
- stainless steel chamber
- accessories:
 - sealing ring Ref. № 041010013
 - metal filter Ref. № 041010018
 - basket Coltene Ref. № 041010300
 - basket A.gree Ref. № 041010400



Ref. № 041000000

	Technical data
Power supply	230 V ±10%, 50 Hz
Power consumption	1220 W
Working chamber internal dimensions	Φ 140 mm, H 145 mm
Chamber volume	1,5 l
Maximum working pressure	6 bar
Programmable working pressure	from 40 up to 125°C
Programmable time for polymerization	from 1 to 99 min
Dimensions W/D/H	315x350x260 mm
Weight	13 kg

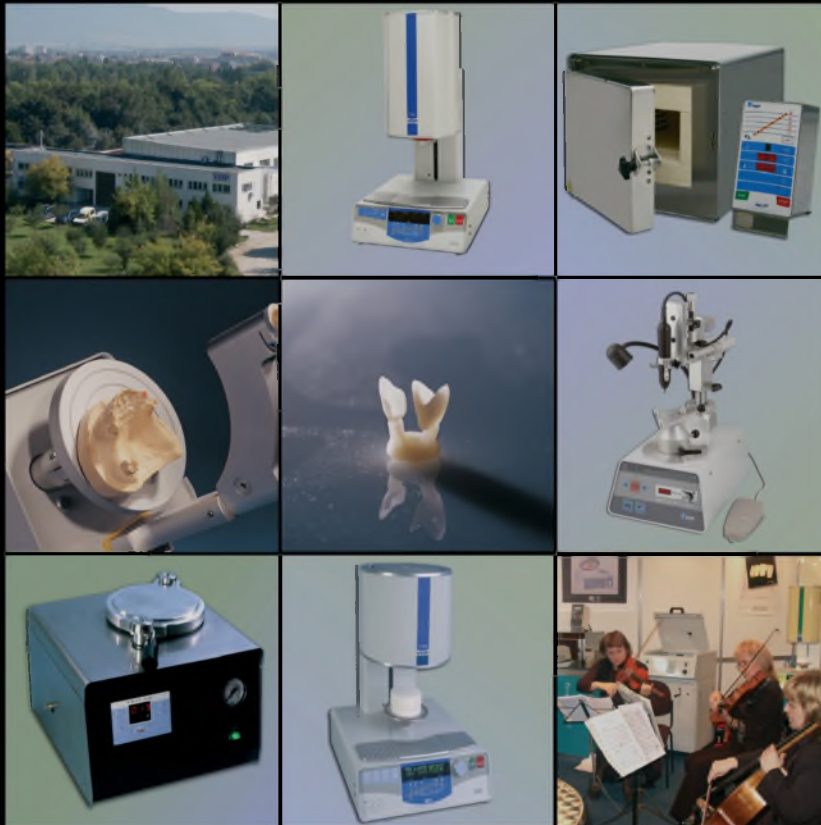
MDT Jan Schünemann

“Modern High-Performance ceramics needs a precise firing procedure/guidance.”



VOP

Our mission is constantly to improve what is essential in Dental by mastering science and smart technology.



Industrial Zone Microelectronica; 2140 Botevgrad; Bulgaria
Postal address: POBox 35
Tel: +359 723 66 303; 66 304; Tel. / Fax: +359 723 66 304; 66 305
e-mail: official@vop-bg.com
www.vop-bg.com

